

"Orienteering is a challenging outdoor adventure sport enjoyed by people of all ages, abilities and backgrounds."



Experiences of Planning and Delivering Virtual O

Presented by Phill Batts of CLOK
and ARMY Orienteering

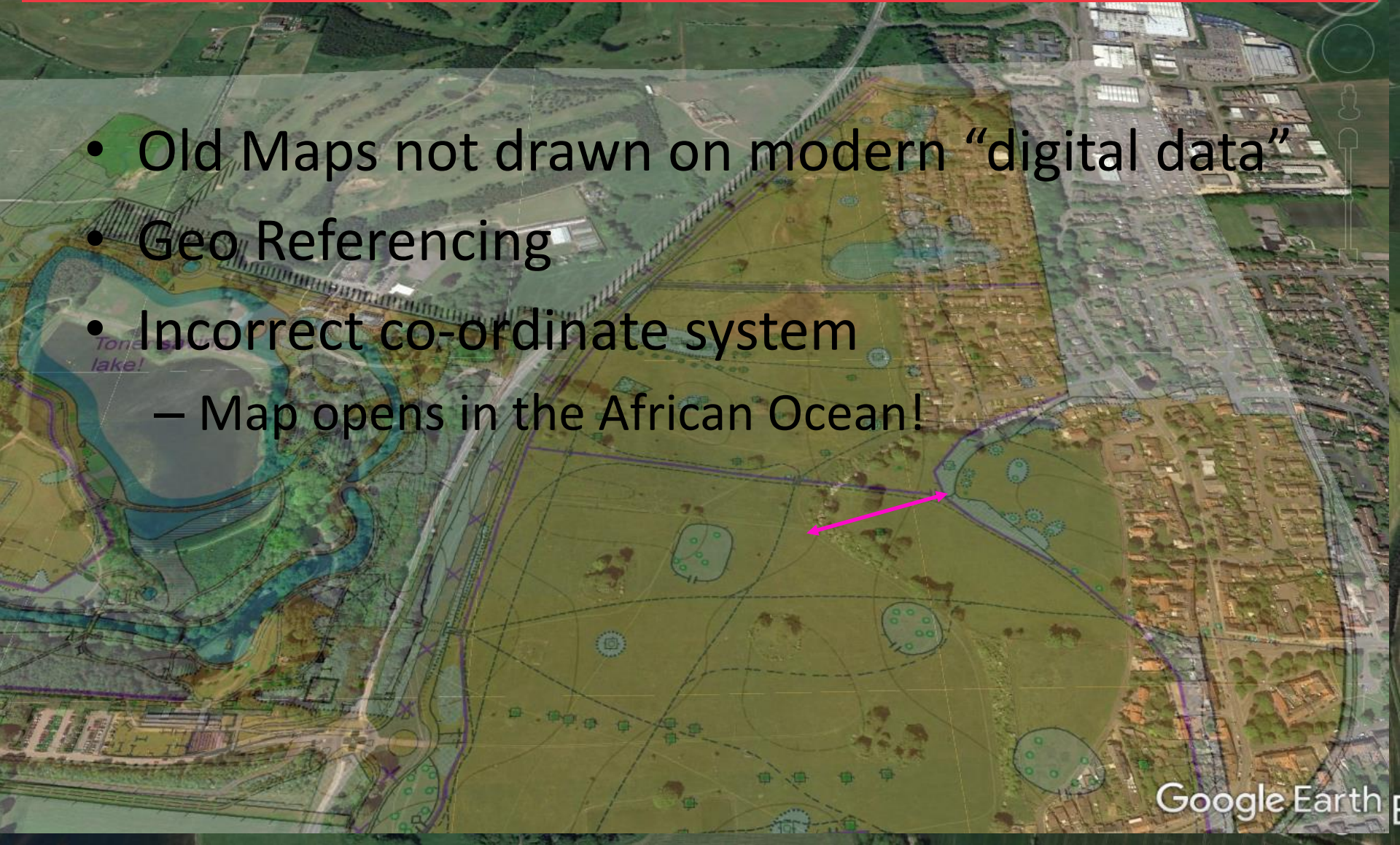


Session Contents

- Issues with Maps
- Fixing Maps in OCAD 2018
- Google Earth
- Current Set-Up Process
- Current Event Process
- Future Ideas

Issues with Maps

- Old Maps not drawn on modern “digital data”
- Geo Referencing
- Incorrect co-ordinate system
 - Map opens in the African Ocean!



Adjusting Maps in OCAD 2018

- Add Geo Referenced Satellite Images
- Select many issues around perimeter and some in central area
- Transform map



Google Earth

- Use as
- Issues
- Creati

The screenshot displays the Google Earth Pro interface. On the left, the 'Places' panel shows a hierarchical tree of locations, with 'Darlington' and 'South Park' expanded. The 'Layers' panel at the bottom left shows 'Primary Database' and 'Announcements' layers. The main map area shows an aerial view of Darlington South Park with a semi-transparent map overlay. The map overlay includes a title 'Darlington South Park', a scale of 1:5,000, and contours of 2.5m. A legend in the top left of the map overlay lists features such as 'Wall', 'Fence', 'Hedge', 'Private area', 'Water', and 'Out of bounds'. A scale bar indicates 0, 50m, 100m, and 150m. The map is overlaid with numerous numbered markers (e.g., 40, 41, 42, 43, 44, 48, 49, 50, 51, 52, 53, 54, 55, 56, 57, 58, 59, 60, 61, 62, 63, 64, 65, 66, 67, 68, 69, 70, 71, 72, 80, 81) and various colored polygons. A 'Layers' panel at the bottom of the map overlay lists features like 'Contour/Stage line', 'Knots', 'Depression', 'Shoulder', 'Lake', 'Pond', 'Drain cover', 'Thicket', 'Pierment tree', 'Small tree', 'Hedge', 'Crag', 'Stairway', 'Building', 'Canopy', 'Monument', 'CCTV post', 'Pillar', 'Post', 'Apparatus', 'Hard surface', 'Tree canopy', 'Open land', and 'Garden'. The bottom right of the map overlay contains a disclaimer: 'Based on the Ordnance Survey with the permission of the Controller Her Majesty's Stationery Office. Possession of this map does not imply right of access for orienteering or any other purpose.' and 'Original survey: Roberts Mapping 2001. Latest updates: Phil Batts 2020. Cartography: Paul Taylor 2016 & Phil Batts 2020. © Copyright Cleveland Orienteering Club 2020. Grid reference (Grids)'. The bottom right corner of the screenshot shows the 'teering' logo.

Current Set-Up Process

- Ensure map is Geo Referenced and at current rotation
- Create KMZ map from *OCAD*, or...
-Create in *Open Orienteering Map*. *Open Street Map* editing account very useful
- Plan in *Purple Pen*; NO chance of visiting finish early
- Visit area with All Controls map and Garmin GPSMAP 64
- Record all control sites Lat/Lon on Garmin
- Record all map issues

Current Set-Up Process, continued

- Use *Garmin Basecamp* (free!) to export waypoints and track as a pair of GPX files
- Import GPX files into *Google Earth*
- Improve map if needed
- Create a Check Sites course on *MapRun* server and send PIN code and ACs map to Controller
- Create each course in *Google Earth*
- Get assistance to “Quality Control” course controls
- Create Courses on *MapRun* server

Current Event Process

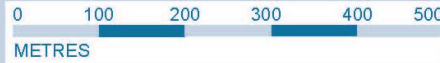
- PIN protect each course if an event or start time “appointments” are needed for always available VOCs
- Have the PIN code expire at last start time
- Have a test start, control and finish in Assy area
- Be able to support the completely unprepared; iPhone and Android
- Issue PIN at minus 5 mins
- Have a unique start kite and 1st control for each start lane

Future Ideas

- Always site a VOC to start and finish in a busy public space such as a supermarket
- Encourage participants to “run” in normal sports kit and not Club kit
- When visiting area 1st time, record ALL viable control sites and store
- Use the *Open Orienteering Map* service to create improved O Maps for all towns in the local area AND have at least one set of: very short, short, medium and long courses

Questions?

South Burdon Woods Scale 1: 7500 contours 2.5m



CLEVELAND
ORIENTEERING
KLUB
www.clok.org.uk



SYMBOLS: ISOM2017 - 200%

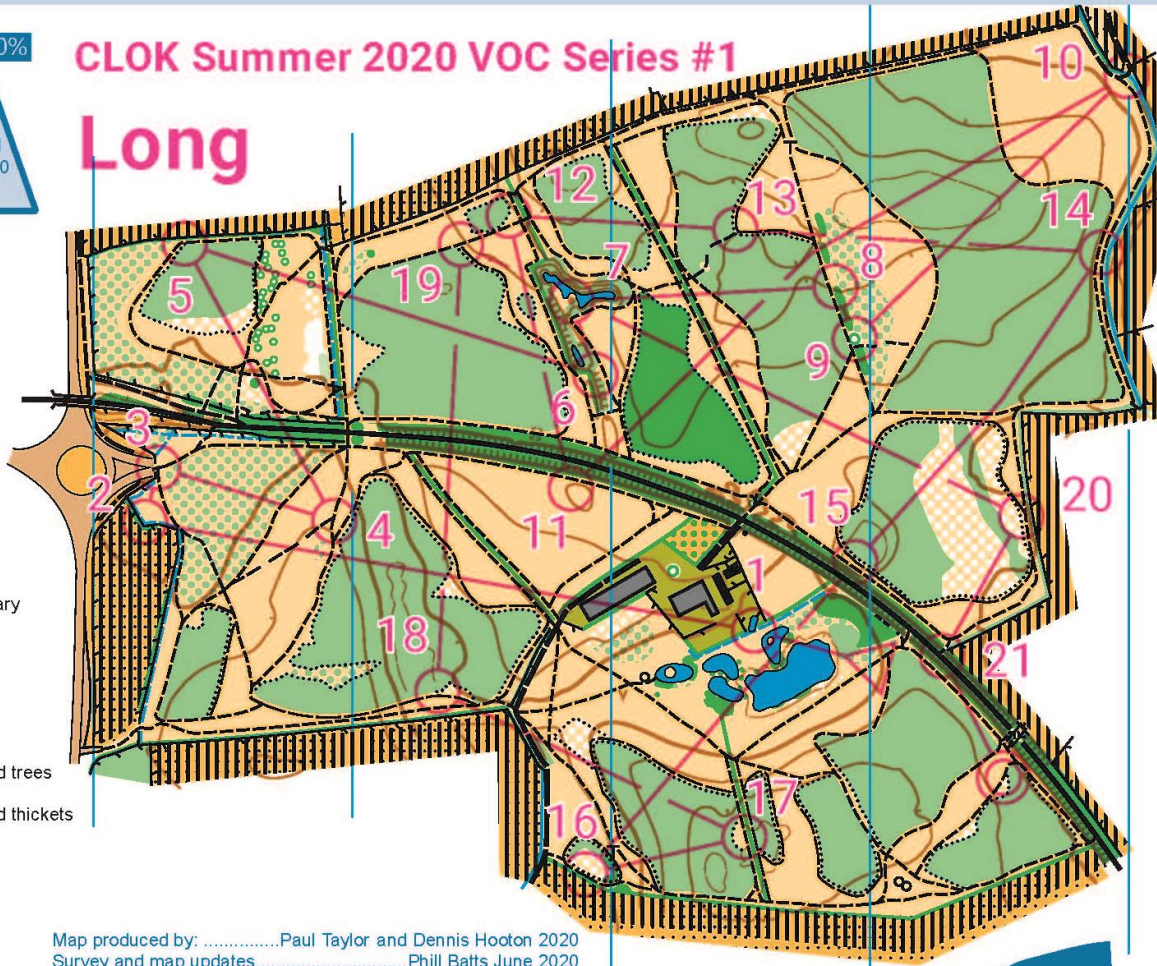
- Contour
- Index contour
- Form line
- Earthbank
- Knoll
- Depression
- Pit
- Boulder
- Pond
- Ditch



CLOK Summer 2020 VOC Series #1

Long

- Tarmac road
- Bridge
- Forest road
- Track
- Footpath
- Small mown path
- Mown ride
- Small path
- Indistinct small path
- Fence
- Hedge
- Building
- Pipeline
- Drain cover
- Distinct vegetation boundary
- Cultivated land
- Open land
- Rough open land
- Rough open with scattered trees
- Rough open with scattered thickets
- Orchard
- Forest: run
- Forest: difficult to run
- Vegetation: difficult to walk
- Private
- Out of bounds



South Burdon				
	Long	7.8 km	50 m	
1	43			
2	44			
3	45			
4	46			
5	47			
6	48			
7	49			
8	50			
9	51			
10	52			
11	53			
12	54			
13	55			
14	56			
15	57			
16	58			
17	59			
18	60			
19	61			
20	62			
21	63			

Map produced by:Paul Taylor and Dennis Hooton 2020
 Survey and map updates.....Phill Batts June 2020
 LIDAREnvironment Agency
 ©Cleveland Orienteering Klub
 OS Grid reference433000, 515000

Based on the Ordnance Survey
 with the permission of the Controller/Her Majesty's Stationery Office

© Crown Copyright 2020 OS 100015287
 © Environment Agency 2020. All rights reserved

Possession of this map does not imply a right of access for orienteering or any other purpose. The representation of a path or track does not indicate a right of way.